



REHASENSE

BROADBAND

Aluminium ramps

Our BROADBAND ramps are manufactured using aluminium honeycomb panels with anti-slip tape on the top for maximum safety. The honeycomb core ensures low weight yet high strength and durability.

The ramps folding design makes it convenient for storage and portability.

The ramps are available in many sizes, in both platform and channel designs.



REHASENSE
Sulejowska 45
97-300 Piotrkow Trybunalski
Poland
E-mail: info@rehasense.com

www.rehasense.com

BROADBAND Beam

Foldable aluminium ramp

Features

- » Aluminium ramp with anti-slip surface
- » Please find item numbers and specifications on page 4



• Foldable handle



• Transportation lock

BROADBAND Ray

Two single foldable aluminium ramps

Features

- » Aluminium ramp with anti-slip surface
- » Please find item numbers and specifications on page 4



• Foldable with 2 hinges



• Foldable handle



• Transportation lock



• High and safe side edges



REHASENSE

BROADBAND Spectrum

Foldable aluminium ramp

Features

- » Aluminium ramp with anti-slip surface
- » Please find item numbers and specifications on page 4



- Foldable handle



- Transportation lock



- High and safe side walls

BROADBAND Defrag

Foldable two-piece aluminium ramp

Features

- » Aluminium ramp with anti-slip surface
- » Safety lock keep the ramps together when the ramp is in use.
- » Spacers have the function of legs when the ramp is folded. They also help keeping the ramps in place when the ramp is in use.
- » Please find item numbers and specifications on page 4



- Safety lock



- Spacers have the function of legs when the ramp is folded



- Foldable handle



- Transportation lock



- High and safe side walls

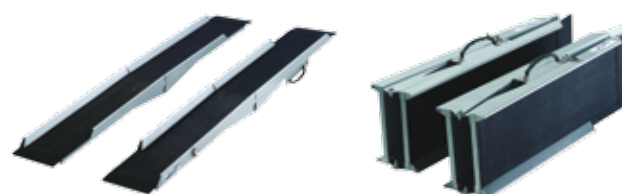


Item numbers & specifications



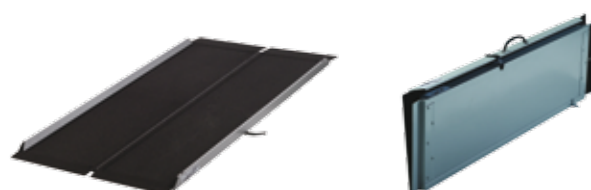
BROADBAND Beam

Name	Length (cm)	Track width (cm)	Max height for step (cm)	Weight (kg)	Max load (kg)	Part no.
BROADBAND Beam 450	45	71	9	4.1	300	BB1P04571



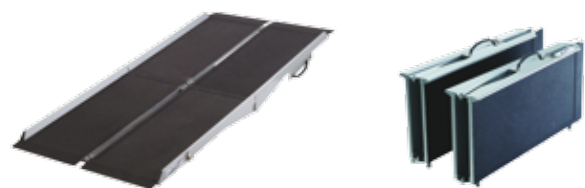
BROADBAND Ray

Name	Length (cm)	Track width (cm)	Max height for step (cm)	Weight (kg)	Max load/pair (kg)	Part no. Set of 2 ramps
BROADBAND Ray 1500	150	2 x 25	30	2 x 5.0	2 x 200	BB2P15025
BROADBAND Ray 1800	180	2 x 25	36	2 x 5.7	2 x 200	BB2P18025
BROADBAND Ray 2100	210	2 x 25	42	2 x 6.8	2 x 200	BB2P21025



BROADBAND Spectrum

Name	Length (cm)	Track width (cm)	Max height for step (cm)	Weight (kg)	Max load (kg)	Part no.
BROADBAND Spectrum 700	70	76	14	6.3	300	BB1P07076
BROADBAND Spectrum 900	90	76	18	7.6	300	BB1P09076
BROADBAND Spectrum 1200	120	76	24	9.5	300	BB1P12076
BROADBAND Spectrum 1500	150	76	30	11.5	300	BB1P15076



BROADBAND Defrag

Name	Length (cm)	Track width (cm)	Max height for step (cm)	Weight (kg)	Max load/pair (kg)	Part no. Set of 2 ramps
BROADBAND Defrag 1800	180	76	36	2 x 7.1	2 x 150	BB2P18038
BROADBAND Defrag 2400	240	76	48	2 x 10.6	2 x 150	BB2P24038
BROADBAND Defrag 3000	300	76	60	2 x 12.4	2 x 150	BB2P30038