



# SPARE PARTS MANUAL

## LAND RANGER XL

FR510GDX II



**Before purchasing, please contact us on  
01535 669604 to check correct requirements**

# INDEX

**P1 HANDLE BAR ASSEMBLY**

**P2 CHASSIS MOULDINGS**

**P3 FRONT CHASSIS ASSEMBLY**

**P4 REAR CHASSIS DRIVE SYSTEM ASSEMBLY**

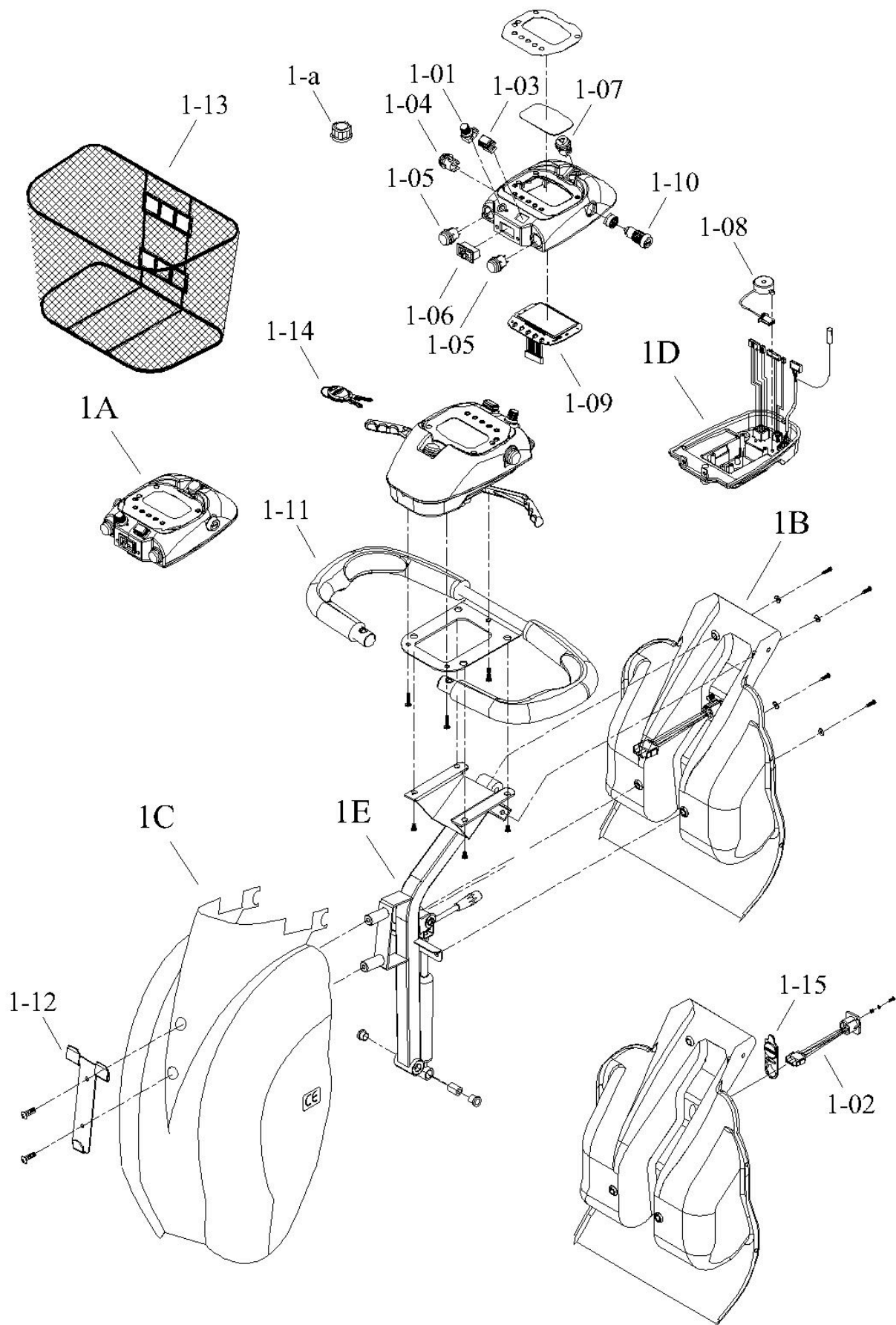
**P5 STEERING SYSTEM**

**P6 HAND BRAKE ASSEMBLY**

**P7 SEAT ASSEMBLY**

**P8 CONSOLE AND WIRING SYSTEM**

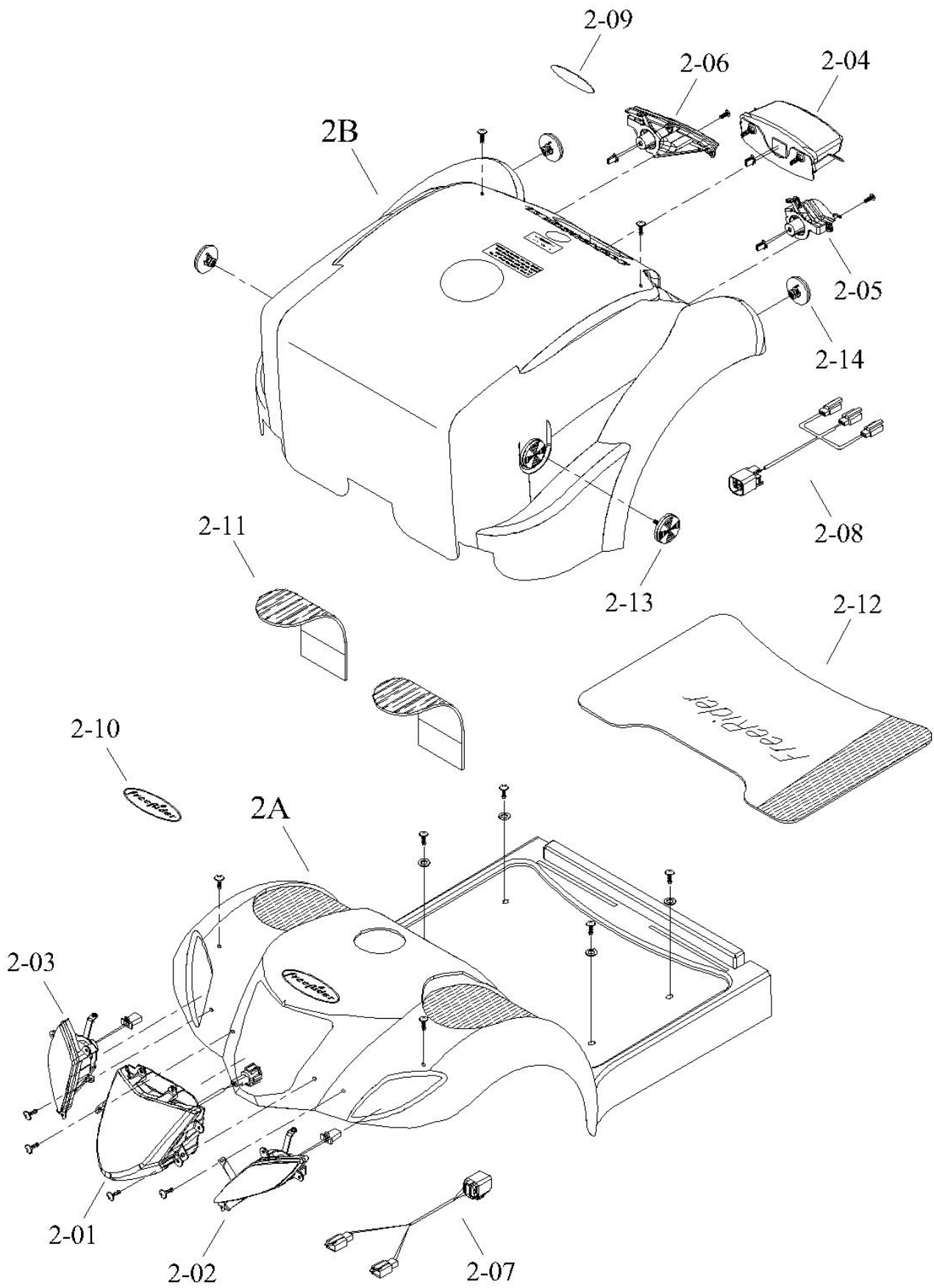
# HANDLE BAR ASSEMBLY



# HANDLE BAR ASSEMBLY

DRAWING NO.	PART NO.	PART NAME	€	GBP	USD
1A	AA01-0324-D2	TOP CONSOLE COVER ASSY.			
1B	AA02-1200-D2	HANDLE BAR COVER REAR ASSY.			
1C	AA03-0205-D2	HANDLE BAR COVER FRONT ASSY.			
1D	AA03-0610-D2	BASE CONSOLE COVER ASSY			
1E	PA01-A406	TILLER ASSY.			
1-01	PAE1-0105-MO	VARIABLE RESISTOR 20KVR ASSY.			
1-02	PAE1-0412	CHARGER SOCKET ASSY.			
1-03	PKE1-0111	HEADLIGHT SWITCH			
1-04	PKE1-0112	HI/LO SPEED SWITCH			
1-05	PKE1-0113	HORN BUTTON			
1-06	PKE1-0114	INDICATOR SWITCH			
1-07	PKE1-0115	WARNING SWITCH			
1-08	PKE1-0605-B	HORN			
1-09	PKE1-0705	LCD			
1-10	PM01-0100	KEY SWITCH			
1-11	PM02-0516	PU HANDLE			
1-12	PM03-0300-D1	BASKET HOOK			
1-13	PM90-0100	BASKET			
1-14	PM90-0900	KEY			
1-15	PP06-0103	CHARGER SOCKET (RUBBER)			
1-a	PP01-0501	SPEED KNOB			

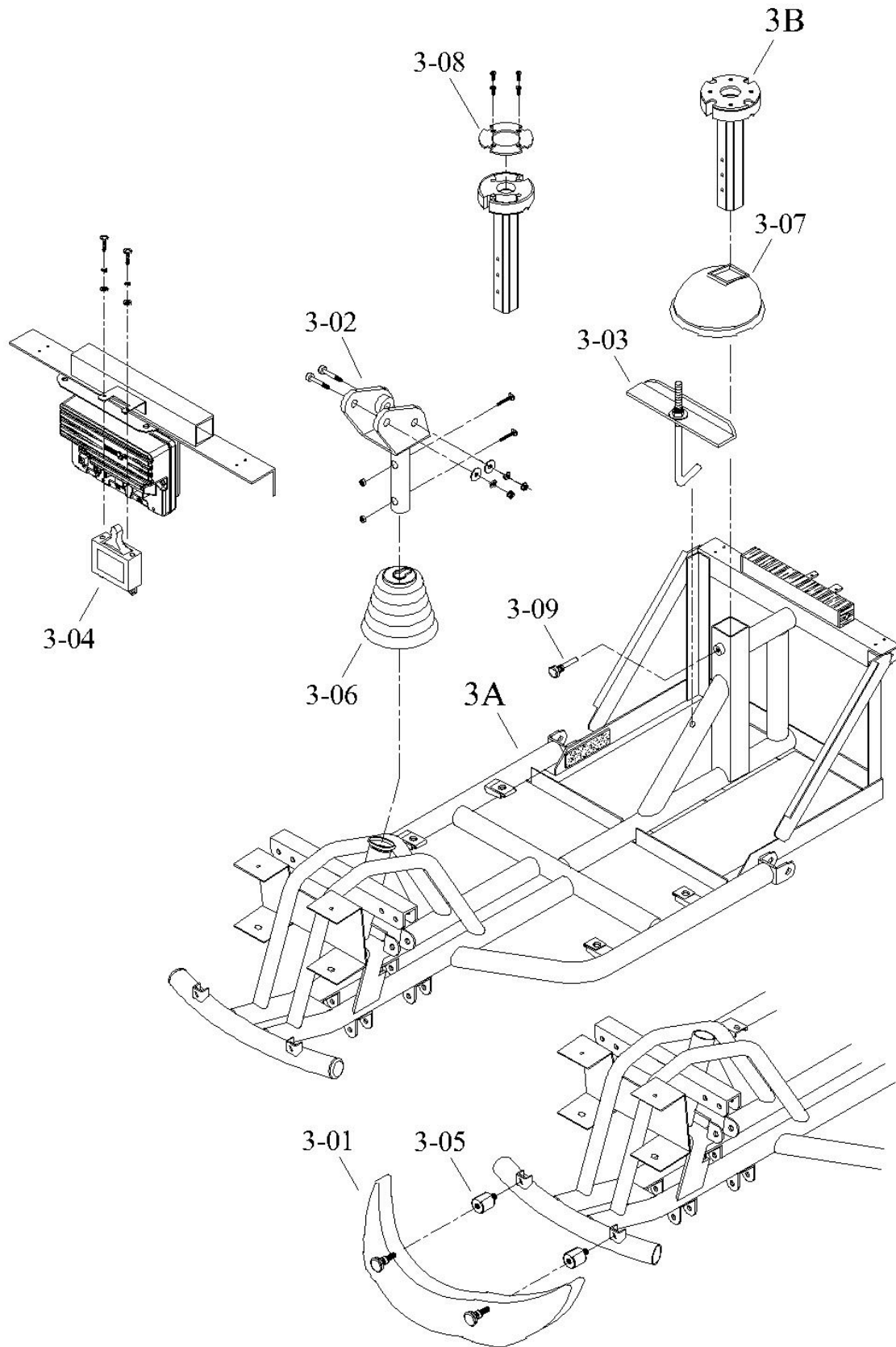
# CHASSIS MouldINGS



# CHASSIS MOULDINGS

DRAWING NO.	PART NO.	PART NAME	€	GBP	USD
2A	AA04-0207-D2	FRONT CHASSIS COVER ASSY.			
2B	AA05-0215-D2	REAR CHASSIS COVER ASSY.			
2-01	PA06-A303	HEAD LIGHT ASSY.			
2-02	PA06-A304-L	TAIL LIGHT LEFT ASS.			
2-03	PA06-A304-R	TAIL LIGHT RIGHT ASSY.			
2-04	PA07-A201	REAR LIGHT ASSY.			
2-05	PA07-A202-L	INDICATOR LIGHT LEFT ASSY.			
2-06	PA07-A202-R	INDICATOR LIGHT RIGHT ASSY.			
2-07	PKE3-0401	FRONT INDECATOR CONNECTING WIRE			
2-08	PKE3-0505	REAR INDECATOR CONNECTING WIRE			
2-09	PL00-0100	LABEL "FREERIDER"			
2-10	PL00-0200	LABEL" FREERIDER "			
2-11	PP04-0403	CARPET			
2-12	PP04-0524	FLOOR MAT			
2-13	PP05-0400-Y	REFLECTOR (YELLOW)			
2-14	PP05-0400-R	REFLECTOR (RED)			

# FRONT CHASSIS ASSEMBLY

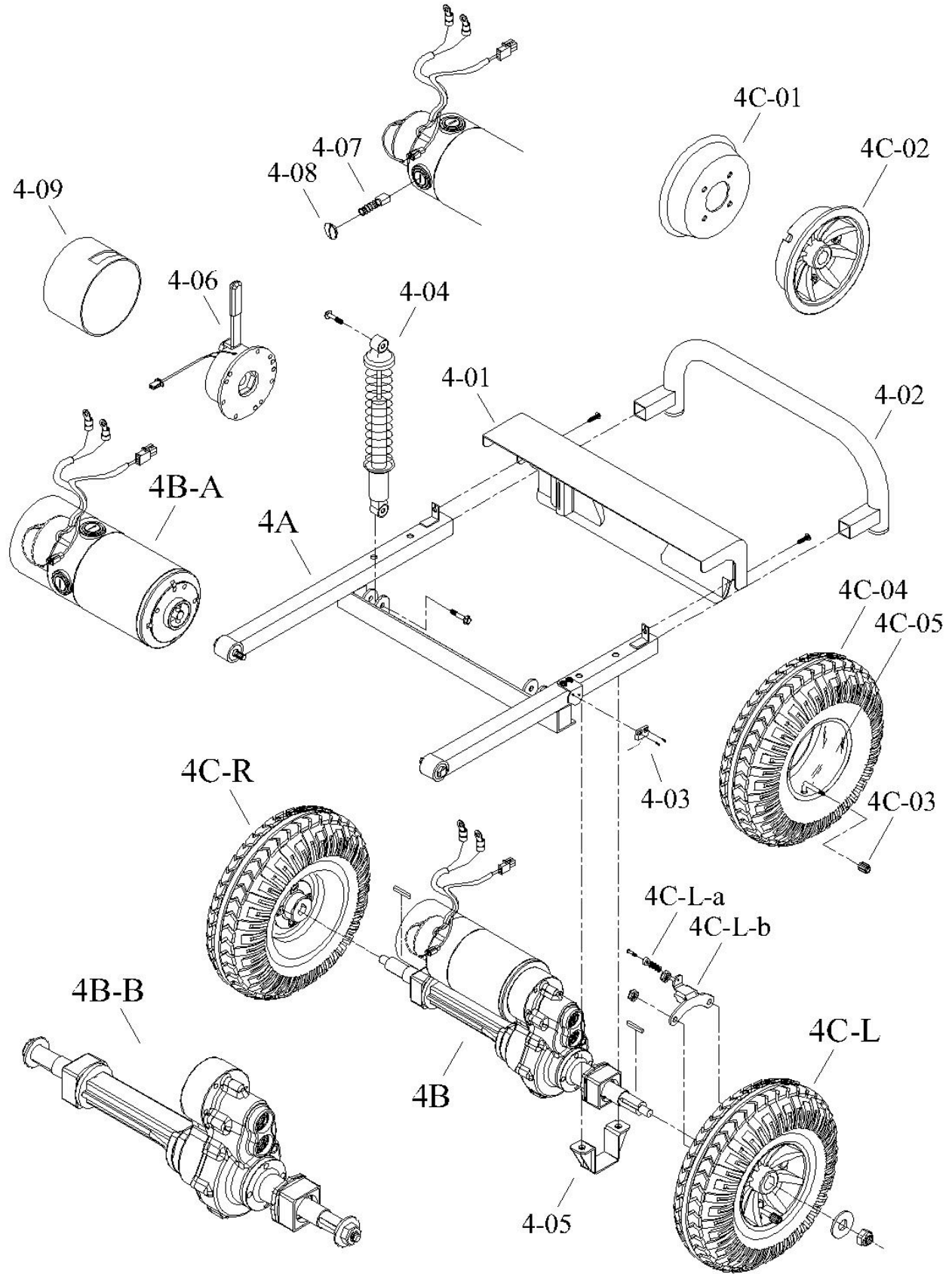


# FRONT CHASSIS ASSEMBLY

DRAWING NO.	PART NO.	PART NAME	€	GBP	USD
3A	AB06-0202-1	FRONT CHASSIS ASSY.			
3B	PA06-A701	SEAT POST ASSY.			
3-01	PA06-A402	FRONT BUMPER ASSY			
3-02	PM10-0110	HANDLE BAR JOINTBASE			
3-03	PA90-0300	BATTERY BRACKET ASSY.			
3-04	PKE2-0407	CIRCUIT BREAKER 100A			
3-05	PM00-0123	CONNECTER			
3-06	PP04-0801	RUBBER COVER FRONT			
3-07	PP06-0101	RUBBER COVER REAR			
3-08	PP06-0202	SEAT POST SPACER			
3-09	PV00-0702-1	7/16×15×50L BOLT			



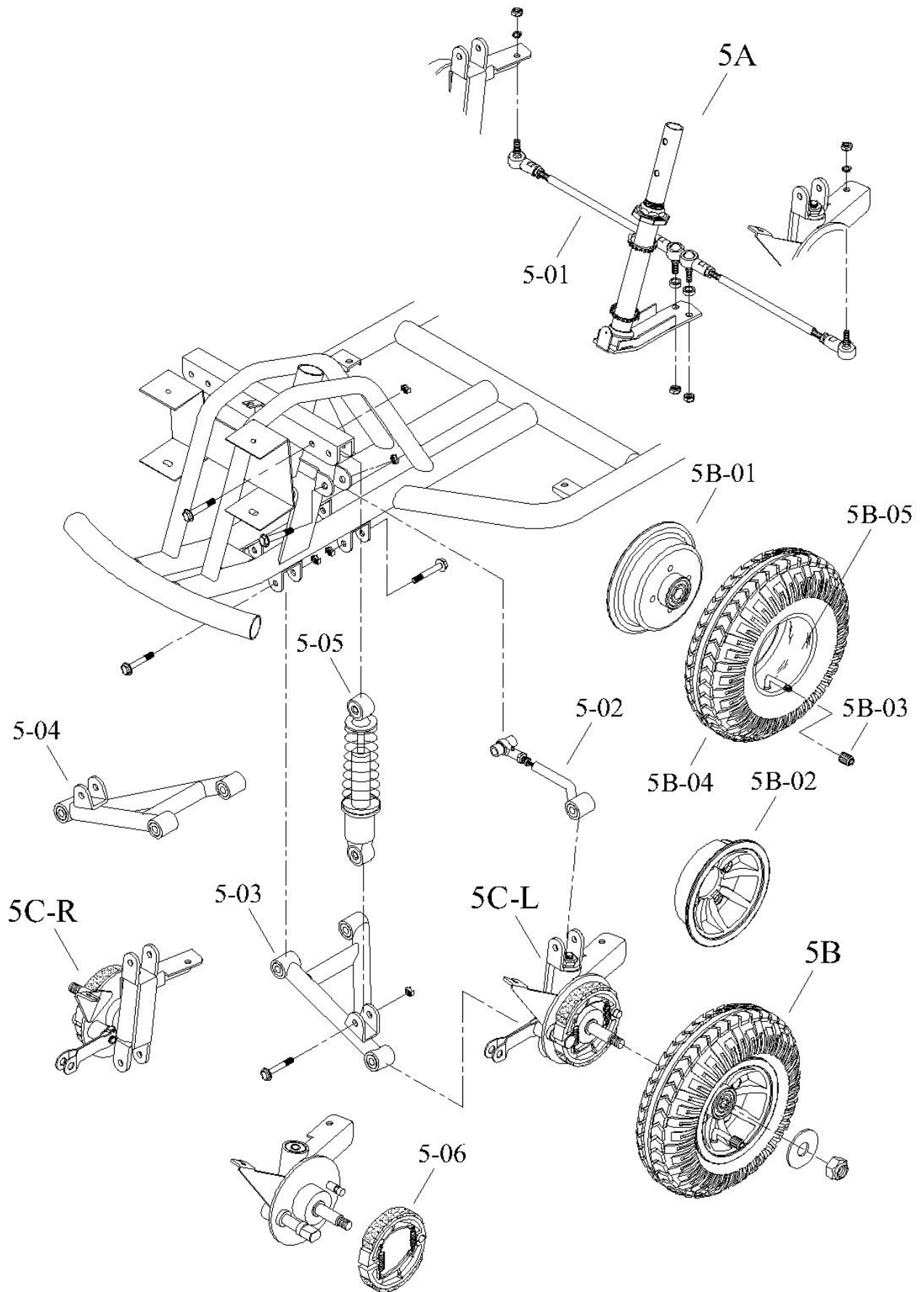
# REAR CHASSIS DRIVE SYSTEM ASSEMBLY



# REAR CHASSIS DRIVE SYSTEM ASSEMBLY

DRAWING NO.	PART NO.	PART NAME	€	GBP	USD
4A	AB07-0200	REAR CHASSIS ASSY.			
4B	AC11-2201-SY54B	FK-104 TRANS AXLE ASSY.			
4B-A	PA05-A130-SY54B	5400RPM MOTOR ASSY. (950W)			
4B-B	PA11-B500	26:1 TRANS AXLE			
4C-R	AC13-0200-DC	REAR (RIGHT) WHEEL ASSY.			
4C-L	AC13-0202-DC	REAR (LEFT) WHEEL ASSY.			
4C-01	PM12-0306	INNER RIM (STEEL) 14"			
4C-02	PM12-0405	OUTER RIM (AL., BLACK) 14"			
4C-03	PP92-0001	VALVE CAP			
4C-04	PP92-0600-DC	4.00-6 C166-3 TYRE			
4C-05	PP93-0700-C	4.00-6 TUBE			
4C-L-a	PM00-1001	MAGNET.			
4C-L-b	PM07-1600	BRACKET FOR MAGNET.			
4-01	PA04-A300-1	MOTOR COVER ASSY.			
4-02	PA07-A401	REAR BUMPER ASSY			
4-03	PKE4-0301	SPEED SENSOR.			
4-04	PM06-0501-D	HYDRAULIC SUSPENSION			
4-05	PM07-0205	TRANSAXLE BRACKET			
4-06	PM11-0118-D	MAGNETIC BRAKE ASSY. (100KG)			
4-07	PM11-0408-61	MOTOR CARBON BRUSH			
4-08	PP11-0205	MOTOR CARBON BRUSH CAP			
4-09	PP11-0603	BRAKE COVER			

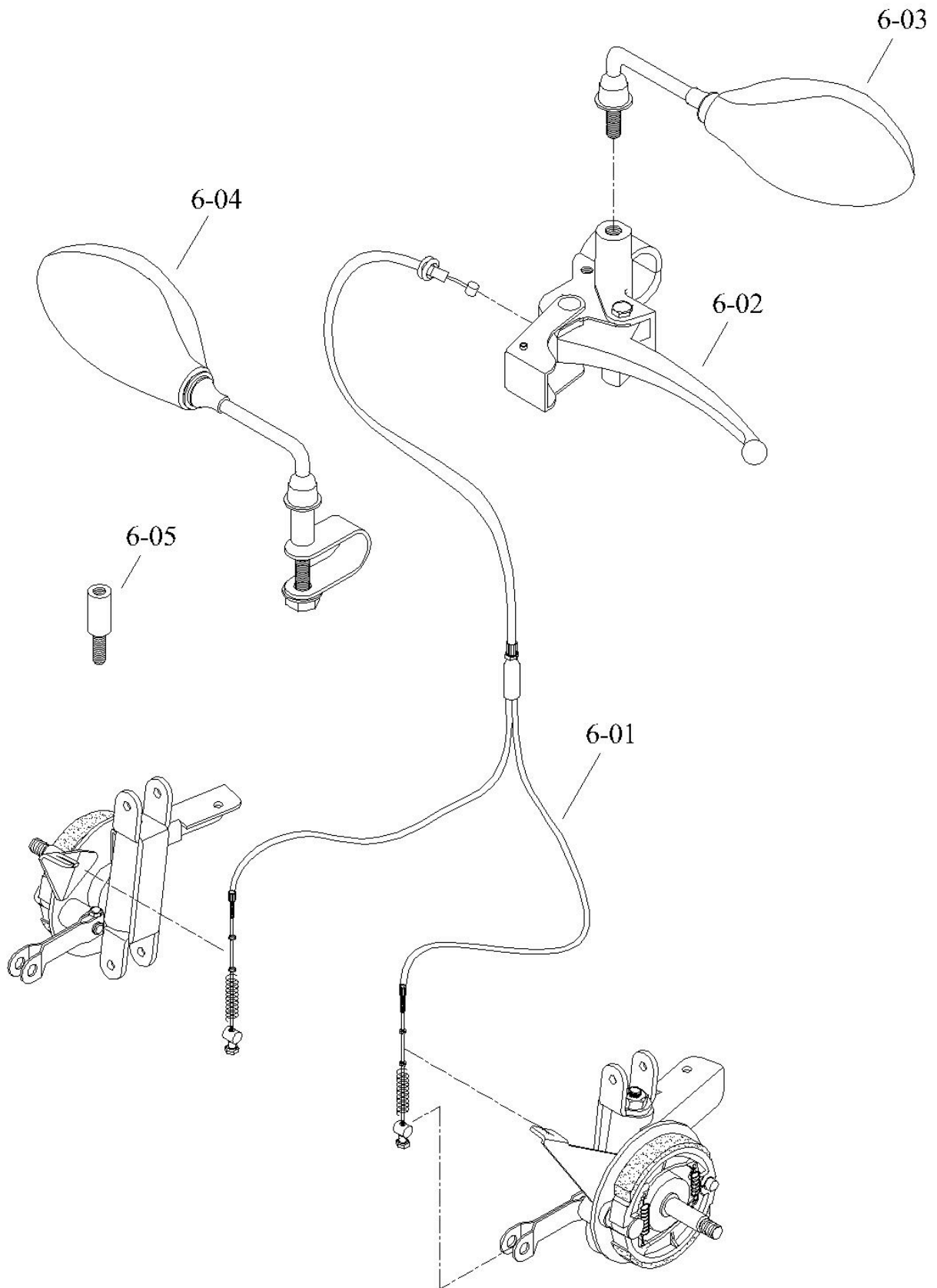
# STEERING SYSTEM



# STEERING SYSTEM

DRAWING NO.	PART NO.	PART NAME	€	GBP	USD
5A	AC08-0200	STEERING SHAFT ASSY.			
5B	AC12-0201-DC	FRONT WHEEL ASSY.			
5B-01	PA19-A501	BRAKE DRUM ASSY			
5B-02	PM12-0406	OUTER RIM (AL., BLACK) 13"			
5B-03	PP92-0001	VALVE CAP			
5B-04	PP92-0400-DC	(4.00~5 C-154) TYRE			
5B-05	PP93-0400-C	(4.00~5) TUBE			
5C-L	PA09-A101-L	STEERING SHAFT LEFT ASSY.			
5C-R	PA09-A101-R	STEERING SHAFT RIGHT ASSY.			
5-01	PA09-A202-L	CONNECTING ROD LONG ASSY.			
5-02	PA09-A500	UPPER ARM ASSY. (BOLT)			
5-03	PA09-A700-L	A ARM LEFT ASSY. (DOWN)			
5-04	PA09-A700-R	A ARM RIGHT ASSY. (DOWN)			
5-05	PM06-0400-R	HYDRAULIC SUSPENSION			
5-06	PM19-0700	LINEAR DISC WITH SPRING			

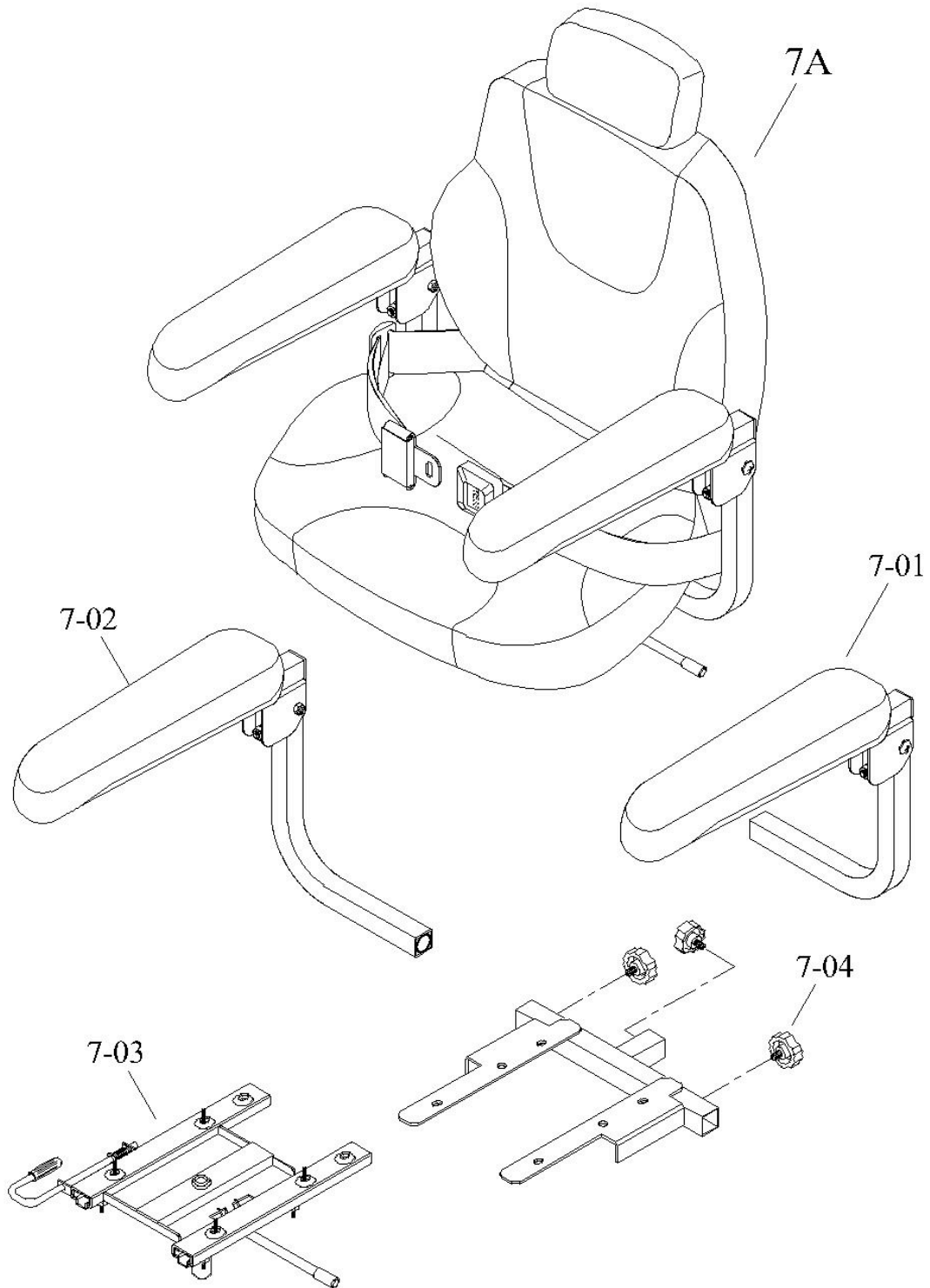
# HAND BRAKE ASSEMBLY



# HAND BRAKE ASSEMBLY

DRAWING NO.	PART NO.	PART NAME	€	GBP	USD
6-01	PA19-A402	BRAKE CABLE ASSY.			
6-02	PM19-0101-L/D	HAND BRAKE (LEFT)			
6-03	PP90-0203-L	LEFT MIRROR			
6-04	PP90-0203-R	RIGHT MIRROR			
6-05	PM03-0400	SPACER FOR MIRROR			

# SEAT ASSEMBLY

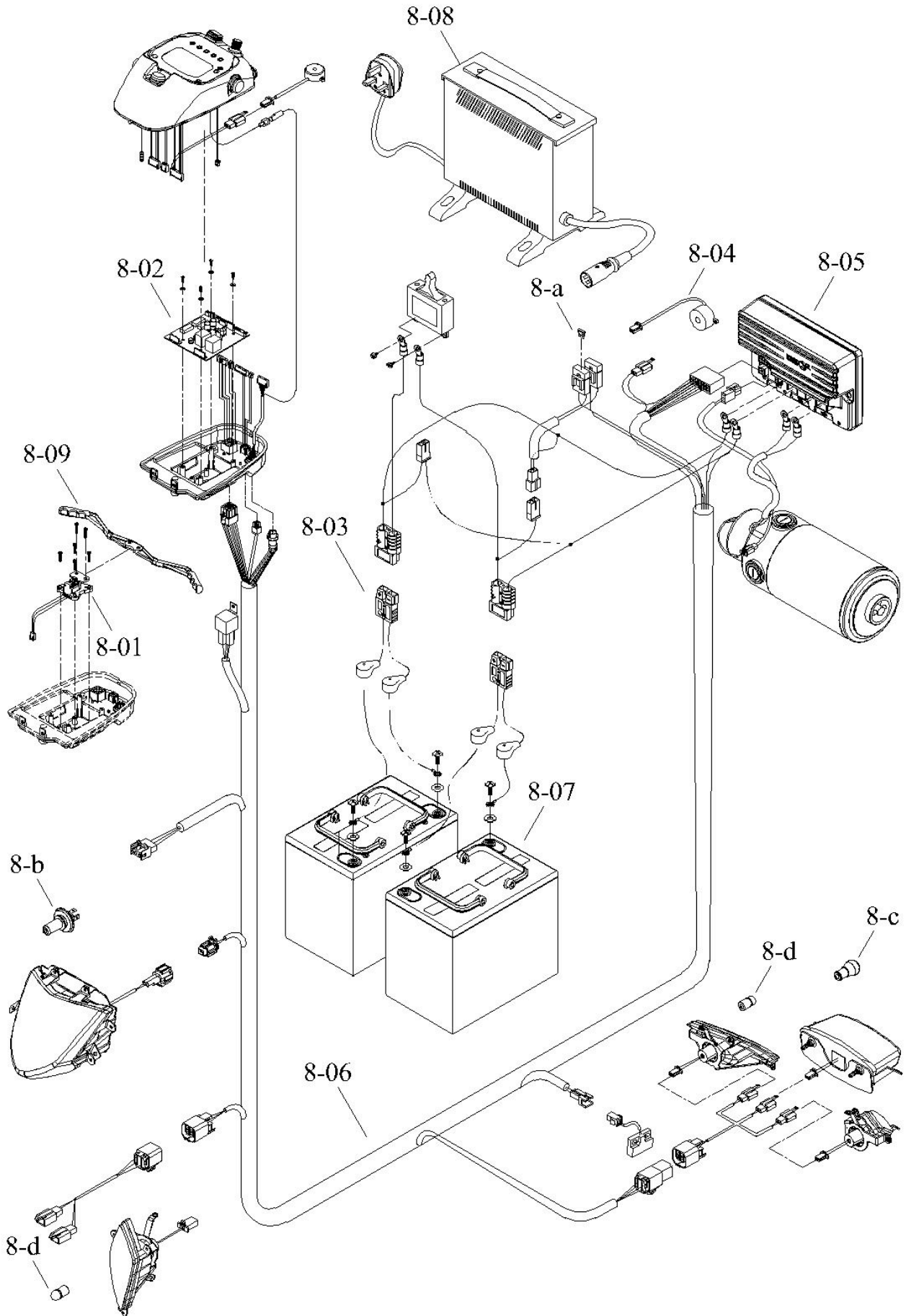


# SEAT ASSEMBLY

DRAWING NO.	PART NO.	PART NAME	€	GBP	USD
7A	AD00-0902-B1	CAPTAIN'S SEAT ARMREST ASSY.			
7-01	AD14-0401-L	ARMREST LEFT ASSY.			
7-02	AD14-0401-R	ARMREST RIGHT ASSY.			
7-03	PA15-A100	RAIL WITH SEAT STAND ASSY.			
7-04	PP00-0200	TIGHTEN KNOB			



# CONSOLE AND WIRING SYSTEM



# CONSOLE AND WIRING SYSTEM

DRAWING NO.	PART NO.	PART NAME	€	GBP	USD
8-01	PA02-A205-J5	5KVR POTENTIOMETER BRACKET ASSY.			
8-02	PAE1-0308	P.C.B (2902B)			
8-03	PAE3-0303	BATTERY CABLE ASSY.			
8-04	PKE1-0601	REVERSE HORN			
8-05	PKE2-0120	CONTROLLER (Rhino II) 160A			
8-06	PKE2-0231	MAIN CABLE ASSY			
8-07	PK90-0208	75A BATTERY			
8-08	PK90-C802-1A	BATTERY CHARGER			
8-09	PP02-0601	WIGWAG ACCELERATOR			
8-a	PKE1-1002	10A FUSE			
8-b	PK00-0110	HS1 12V35/35W HEAD LIGHT BULB			
8-c	PK00-0111	S-25 12V21/5W REAR LIGHT BULB			
8-d	PK00-0112	12V/5W INDICATOR LIGHT BULB			