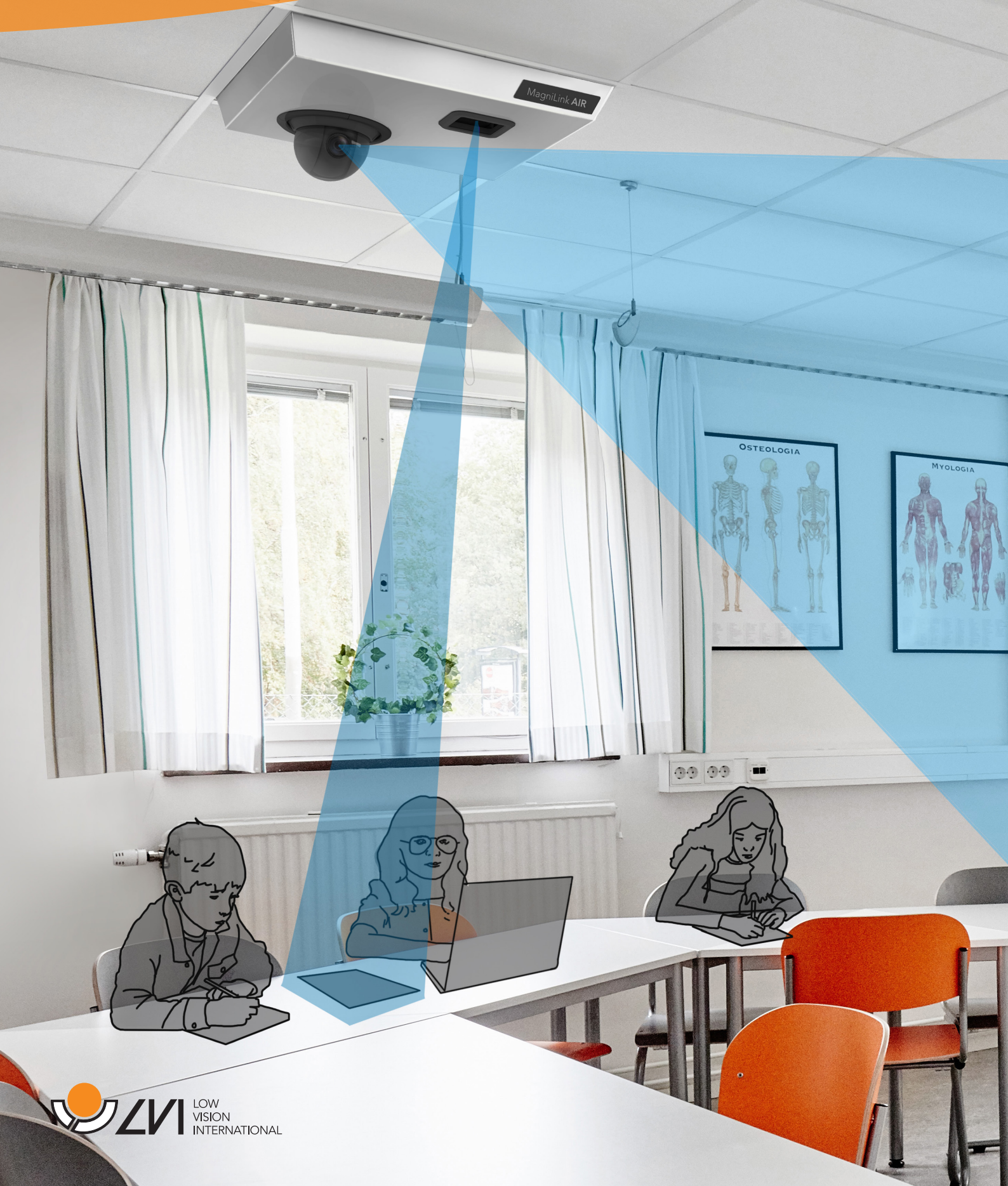


MagniLink AIR



Adapt and combine for a functioning everyday life

The foundation of MagniLink AIR is our MagniLink software used on a computer (PC and Mac) or on a control unit if you don't have access to a computer. Various types of wireless or wired cameras and other accessories that you can combine in different ways are then connected. In this way, MagniLink AIR can be adapted to each user's unique needs. No matter how you choose to design the system, you always have access to lots of useful functions that make everyday life easier and create new opportunities.

MagniLink AIR

1 MagniLink AIR Uno

A wireless camera that can be used both as a reading and distance camera. The camera is normally mounted in a suspended ceiling with 600 x 600 mm ceiling tiles, but can also be mounted in a standard ceiling. The device can be used individually or for image sharing between multiple cameras and can then be combined with the MagniLink AIR Distance camera or a MagniLink reading camera, such as MagniLink S Premium 2 or MagniLink PRO.

2 MagniLink AIR Duo

A wireless dual camera system, where one camera is used as a reading camera and the other as a distance camera. The system is normally attached to a suspended ceiling with 600 x 600 mm ceiling grids, but can also be attached to a regular ceiling.

3 MagniLink AIR Distance

A wired distance camera that is available in versions with table mount, wall mount or ceiling mount. The device can be used independently, together with MagniLink AIR Uno – or a MagniLink reading camera.

*This accessory fits MagniLink AIR Uno/Duo

Accessories

4 MagniLink AIR Framegrabber*

A device that allows you to wirelessly capture the image from an external image source, such as a projector or a smartboard.

5 Control unit

Applied if MagniLink AIR is to be used without a computer. The image from your camera system is then displayed on a separate monitor instead. Comes with pre-installed software and a control box. Can also be controlled with keyboard and computer mouse, available as accessories.

6 OCR/TTS

As an option to the software, there is a text-to-speech function, TTS. This function makes it possible, among other things, to OCR-process, edit and save text – and have the OCR-processed text read aloud.

Other accessories

There are additional accessories available for maximum adaptation to the individual user, including for example an external control box.

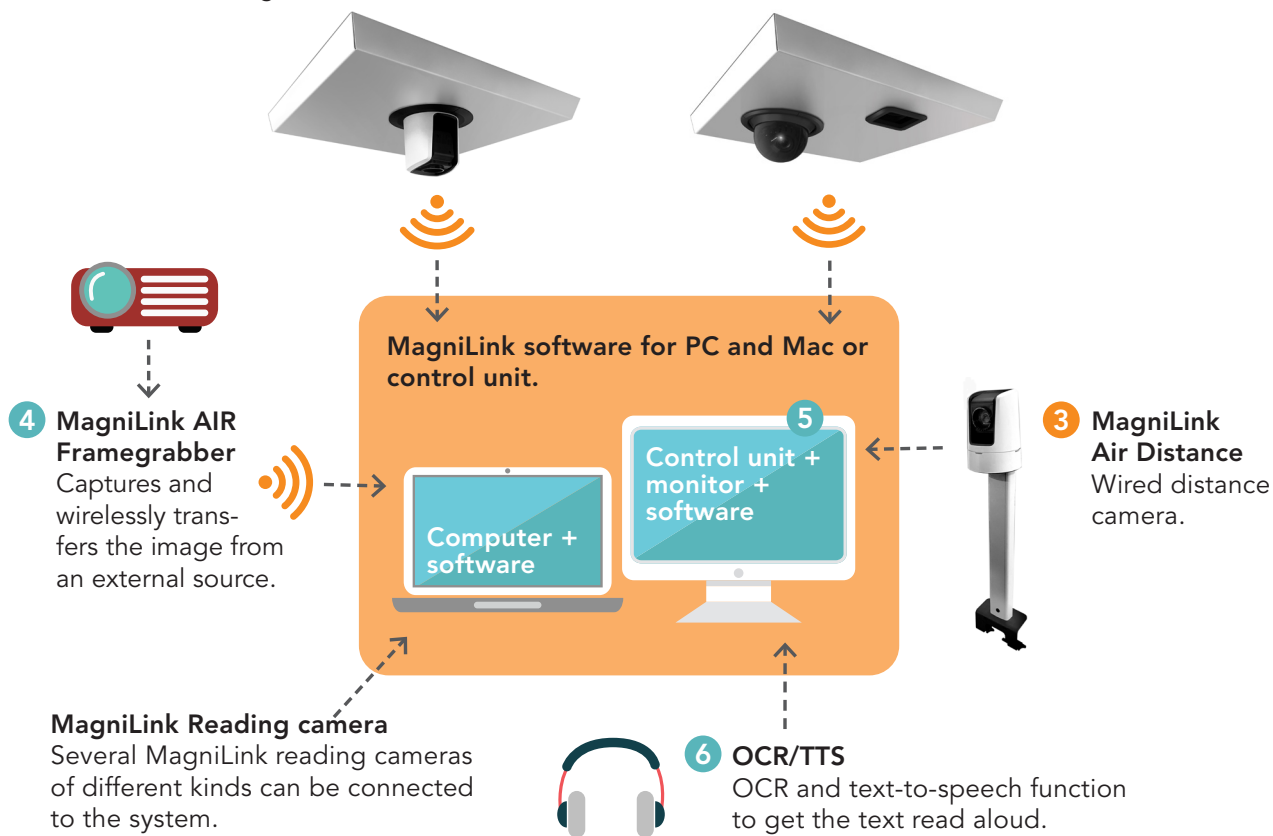
This is how the system is structured:

1 MagniLink AIR Uno

Wireless one-camera system with a combined reading and distance camera.

2 MagniLink AIR Duo

Wireless two-camera system with a distance camera and a reading camera.



Flexible system

MagniLink AIR is a flexible system that makes everyday life easier for the user. The cameras are motorized and controlled from the software via the mouse pointer, keyboard or from an external control panel. By splitting the screen between the image from the distance camera and the reading camera, the user can more easily share the same information as his or her class mates, which increases both participation and independence.

Wifi repeater for increased accessibility

In almost all situations, it's important to be able to use the cameras and simultaneously be connected to the school's network or internet. This is not a problem as our wireless camera systems include a wifi repeater that enables wireless access to a connected network / internet even though the computer is connected wirelessly to the camera system.

There are several ways to combine various cameras and customize the MagniLink AIR system - we will tell you more about these possibilities on the following pages.

MagniLink AIR Uno

The ceiling-mounted MagniLink AIR Uno is an efficient aid for school students with visual impairment. The device can be used both as a distance and reading camera and the user easily controls the motorized camera to look at what is desired. In distance mode the student can see, for example, what the teacher is doing in front of the board. With the reading mode, the student can read books or explore different objects, all displayed at the desired magnification level on the screen.

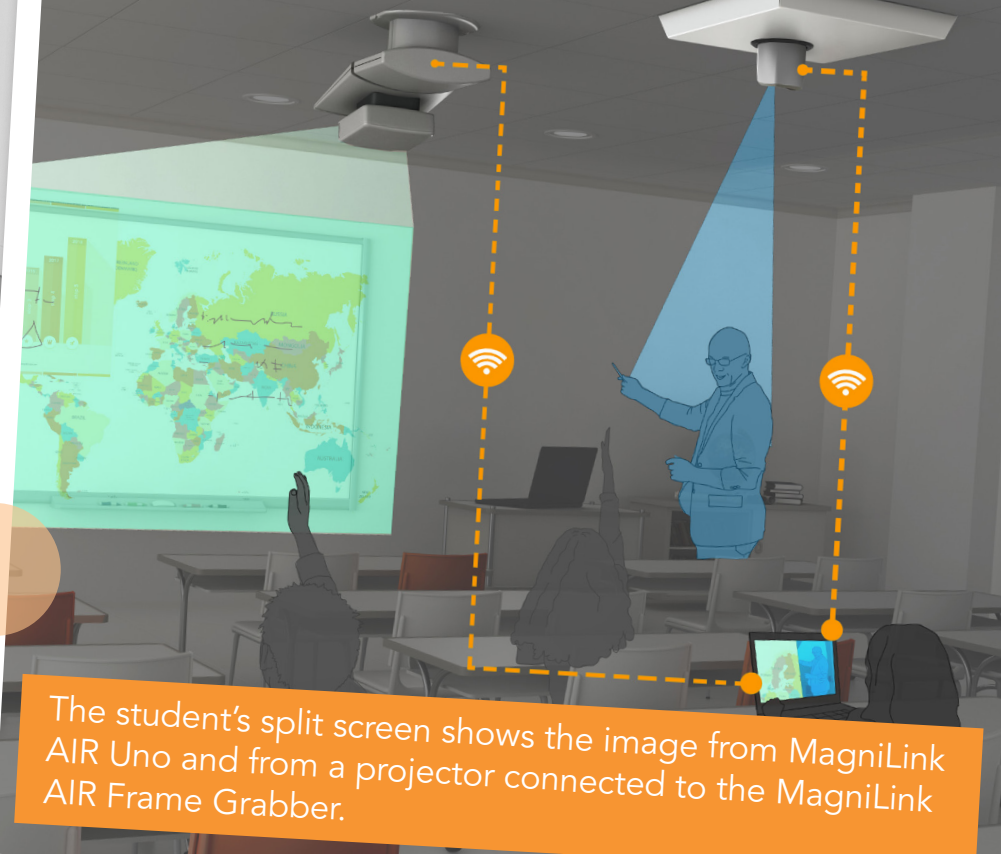
Smooth wireless ceiling system

The system consists of a MagniLink software and a combined reading and distance camera that is mounted in the ceiling. One of the advantages of the camera being mounted in the ceiling is that it facilitates free sight to the object. Another advantage of the MagniLink AIR

Uno is that the image from the camera is transferred wirelessly to the computer, which provides more work space on the desk, as no surface is occupied by cables. Of course, the fact that the camera is of the latest technology and provides a really sharp image also makes it easier for the user.



MagniLink AIR Uno can display a distance image or e.g. the text in a book placed on the table.



The student's split screen shows the image from MagniLink AIR Uno and from a projector connected to the MagniLink AIR Frame Grabber.

View multiple images simultaneously

The computer screen can be easily divided between the image taken with the ceiling-mounted camera, either in distance or reading mode, and the computer image itself. More viewing options will be available if you also choose to connect the MagniLink AIR Distance camera or a MagniLink reading camera, such as a MagniLink S Premium 2, MagniLink PRO or MagniLink Vision. Then you have created a two-camera system and can view the image from both cameras at the same time. In this way, the student can watch on the computer screen what the teacher is doing in front of the board and at the same time see a picture from, for example, a school book with the reading camera.

Accessories that make things easier

If the system is intended to be used by a student who does not have access to a computer, it is possible to choose a control unit with pre-installed software instead. The image is then transferred wirelessly from the ceiling-mounted camera to the control unit, which is connected to a separate monitor that shows the image from the camera.

Another useful accessory is the MagniLink AIR Frame Grabber. This wirelessly transmits the image from an external image source, such as a projector or smartboard, to the computer. More accessories for the system are presented later later on in the brochure.

At the workplace

MagniLink AIR Uno is ideal in a school environment, but fits just as well in, for example, auditoriums or conference rooms at workplaces where people with visual impairment work.



MagniLink AIR Duo

A very flexible and adaptable two-camera system that in the best way facilitates the daily school work for students with visual impairment. The system enables split screen in several ways, which provides extra freedom and efficiency.

Always access to both cameras

This ceiling-mounted motorized two-camera system provides extraordinary flexibility. In one and the same system, you have both a separate distance camera and a separate reading camera. With assistance from the software, you can simultaneously view images from both cameras if desired.

Maximum desk space

Since no table-mounted reading or distance camera is needed, the student gets a maximum of desk space for his or her school work. As the MagniLink AIR Duo is a wireless system, there are no

extra cables to keep track of and that take up space from the work surface. Another advantage of the system is that it's located in the ceiling and thus provides the best possible visibility. The system is perfect for students with a fixed classroom or in other rooms where the possibility of simultaneously viewing pictures from both distance and the desk surface is desired.

No computer is needed

If the system is intended to be used by a student who does not have access to a computer, it is possible to choose a control unit with pre-installed software instead. The



MagniLink AIR Duo is a two-camera system with distance camera and reading camera.

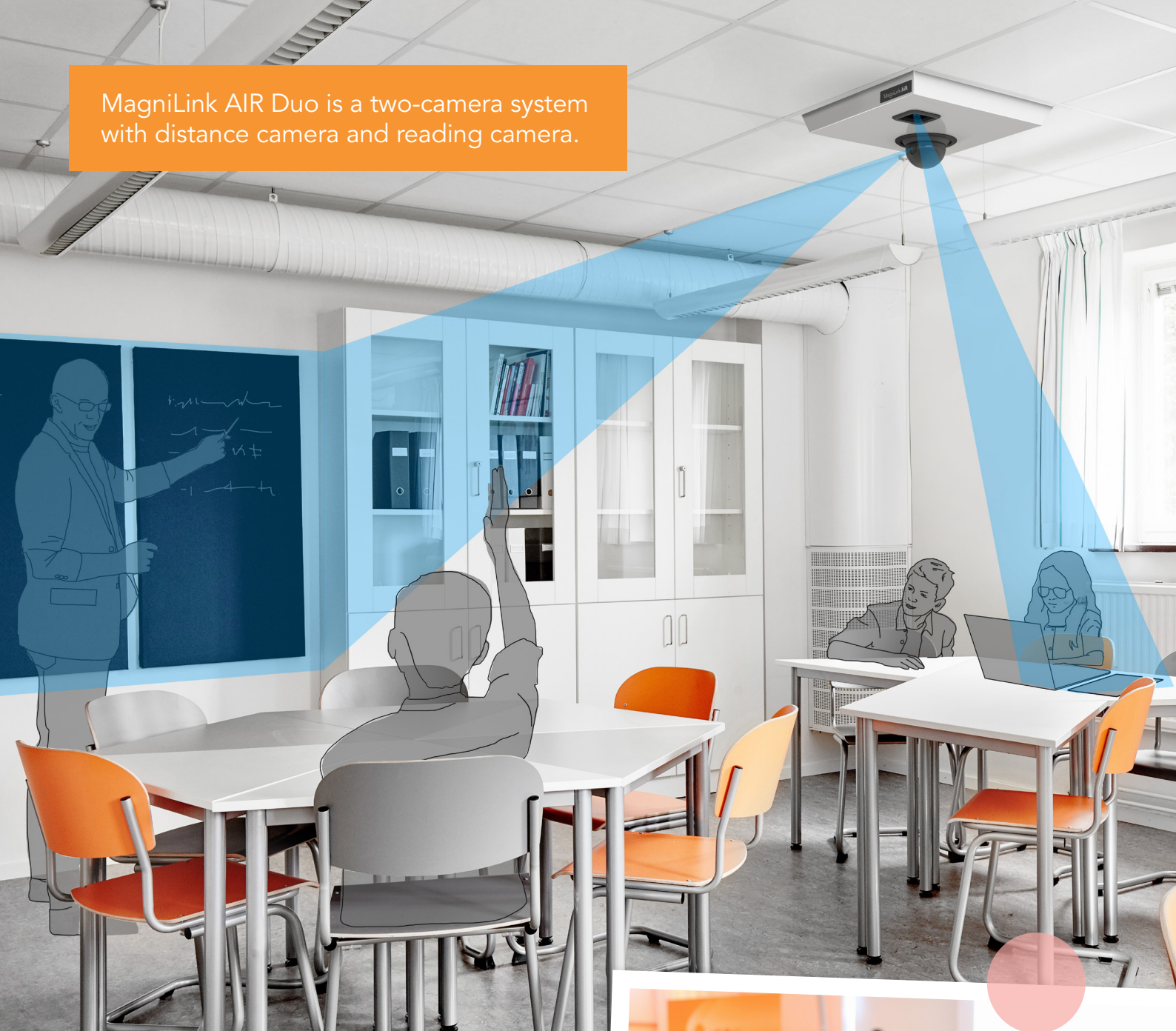


image is then transferred wirelessly from the ceiling-mounted camera to the control unit, which is connected to a separate monitor that shows the image from the camera. A Control box is included, but you can also choose to control the software by a keyboard and a computer mouse.

MagniLink AIR Framegrabber

Another useful accessory is the MagniLink AIR Frame Grabber. This wirelessly transmits the image from an external image source, such as a projector or smartboard, to the computer.



MagniLink AIR Duo also works well, just like other systems in the MagniLink AIR family, in the workplace. The system creates opportunities for increased participation for employees with visual impairment, especially at meetings and conferences.

MagniLink AIR Distance

The camera is best suited for school and work environments where it can be combined with a MagniLink reading camera and other accessories adapted to the individual needs and desires of the user. This creates opportunities for a better, more independent everyday life!



Dual camera system where the student sees an image from the distance camera MagniLink AIR Distance and the reading camera MagniLink S Premium 2.



Flexibility with three versions

MagniLink AIR Distance is a wired distance camera that is available in three versions: for table, wall or ceiling mounting.

Use separately or combine

MagniLink AIR Distance allows the user to see on their screen what is happening in the distance. With the split function, it is possible to simultaneously view this distance image and something else, for example a text document, that the user has on the computer. MagniLink AIR Distance can also be combined with a range of MagniLink reading cameras and accessories to create a unique system that suits the individual user. Together with a MagniLink reading camera or the ceiling-mounted MagniLink AIR Uno you create an efficient two-camera system that can display images from a distance camera and a reading camera simultaneously on the screen.

Adaptation at the individual level

It's the software that controls the system's features, such as level of magnification, contrast, color and brightness, so that everything displayed on the screen fits the individual user. An optional text-to-speech function, TTS, is also available. This makes it possible, among other things, to OCR-process a text and have it read aloud. On the next page we will tell you how you can further adapt the system.

Customize with accessories

Since each user is unique and has different needs, it's important to be able to adapt and combine the camera system to support the user in the best way. When you create a MagniLink AIR camera system, you can therefore choose from a number of practical accessories.

MagniLink AIR Framegrabber*

The device captures the image from an external image source, such as a projector or smartboard, which facilitates the display of presentations. In other words, the person with impaired vision can see the presentation directly on their own screen and e.g. enlarge and change the contrast in the displayed image.

Control unit

If the MagniLink AIR system is to be used by a student who does not have access to a computer, you can use a control unit with pre-installed software instead. The image is then transferred wirelessly from the cameras to the control unit. This unit is in turn connected to a separate monitor that displays the image.

MagniLink reading cameras, MagniLink AIR Frame Grabbers and even a computer can also be connected to the control unit, and you can then simultaneously view a screen image from the various sources.

An easy-to-use control box is included with the device, but it is also possible to control the system by using a keyboard and a computer mouse.

OCR/TTS

An optional text-to-speech function, TTS, is also available. With this function, it's possible to OCR-process a text and have it read aloud. The OCR-processed text can be displayed in several different image display modes while the text is synchronized with speech. Listening to the text at the same time as you read facilitates increased reading speed, reading comprehension and reading endurance. You can also save and edit in the OCR-processed text.

External control box

A control box can be used to control the camera system, even when the system is connected directly to a computer. This could be helpful if you find it difficult to – or if you prefer not to – control the system directly from the software or computer keyboard.

*This accessory fits MagniLink AIR Uno/Duo



Control box



A frame grabber transmits image from the projector to the screen.



The student uses a control unit which transmits the image from a ceiling mounted camera to a connected monitor.

LVI Low Vision International is recognized as one of the world's leading manufacturers of low vision aids with the mission to make daily life easier for people with visual impairments.

We are certified to ISO 14001 & 9001



Intertek



LVI Low Vision International
Verkstadsgatan 5
352 46 Växjö, SWEDEN
Tel: +46 (0)470 72 77 00
Fax: +46 (0)470 72 77 25
E-mail: info@lvi.se

WWW.LVI.SE